



OverGate 4.0

Motorized bi-directional gate

OG4_Tub_EN_R4



Available with:



standard tubular arm



standard extensible tubular arm



aluminium tubular arm with "Rotated P" profile



aluminium tubular arm



leaf with aluminium frame

CHROME PLATED STEEL

PAINTED

Please specify the RAL colour number

Description

OverGate 4.0 is not just a simple "barrier", but it welcomes and guides your customers according to the defined layout, checks the number, frequency and timetable of transit, and boasts a simple and effective design.

Thanks to our vast range of components and accessories, it can easily be used in sales outlets of all sizes. You can successfully utilise it both for access control and for "self-pay" area control.

Equipped with the latest generation of electronic devices, these units utilise software through which it is possible to change programs and parameters of use with the aid of a joystick located on the control board, adapting it to each customer's individual needs, from discount stores to large supermarkets. The electronic board ensures uniformity of behaviour with any type of arm used, keeping the angular speed and reaction to impacts identical.

Fast and safe, OverGate 4.0 is the best aid in preventing shoplifting.

Areas of use

■ Hypermarkets ■ Supermarkets ■ Museums ■ Sports facilities ■ Swimming pools ■ Gyms

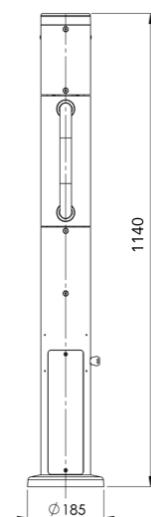


technical specifications

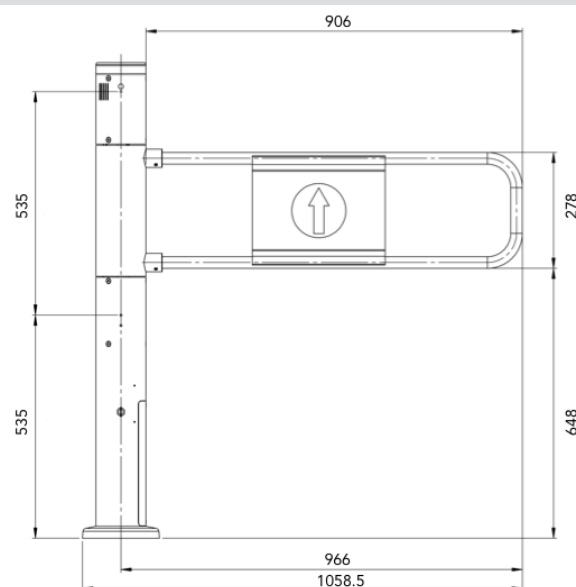
Installation of the gate
requires connection
to mains.

Dimensions indicated in mm

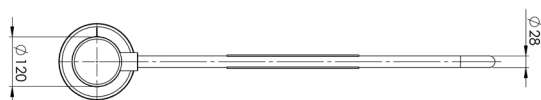
Dimensions - lateral view



Dimensions - front view



Dimensions - view from above



Safety devices

Power failure: In the event of a power failure, the arm is free to move (**UNI EN 1125**). When power returns, if the arm has been moved from its “closed” position, it will automatically return to position.

Impact: In the event of accidental impact with people or things, torque is less than **5 N·m** with immediate stop of the motor.

Anti-panic: If the arm is powered and closed, it can be forced into opening with a push $\approx 30 \text{ N·m}$ (**UNI EN 1125**). The acoustic warning is immediately activated and the arm automatically returns to closed position after a programmable interval of time.

technical specifications

OverGate 4.0



Features

Drive	motorized bi-directional
Power supply unit	single phase 100-240 V AC @ 50/60 Hz
Control logic	26 V DC
Rated absorption	80 W
Electromagnetic brakes	Present and controlled electronically
Torque limiter joint	Present
Rotation speed (90°)	2 s +/- 10% (nominal)
Operating temperature	-10 - +50 °C @ 20 - 90% RH (no cond.)
Weight	31 kg
IP Degree of protection	IP 21
Standard	Complies with CE marking

Materials

Column (std)	mirror-polished chrome plated steel
Arm	polycarbonate or acrylic
Mechanical System	galvanised steel
Sign table	adhesive

Operation

The gate is normally used with arms set in the closed position, orthogonally to the transit lane.

Thanks to contact from devices such as desktop remote controls, remote controls, radar sensors, photocells, selectors and bar code readers (RFID, magnetic badges), the arm rotates 90° in the authorised direction of transit and then closes after a waiting period that can be regulated from the control board.

If an obstacle is met during arm rotation, rotation is immediately stopped, the arm reverses its rotation and goes back to the closed position. If the obstacle is not removed after three attempts at closing, an acoustic warning is activated, indicating to staff to remove the obstacle.

Accessories

Standard 700 mm, 900 mm or 1,150 mm tubular arm
Aluminium tubular arm 1,200 mm
Standard extensible tubular arm: 700 mm - 1.100 mm
900 mm aluminium tubular arm with "Rotated P" profile
650 mm, 850 mm or 1,050 mm leaf with aluminium frame
Sign plates
Kit for acrylic or polycarbonate arm assembly
Motor column traffic light kit
<i>Photocell kit</i>
Column foot photocell kit
Radar kit
Eagle radar kit
Photocell tandem/photocell kit
Radar tandem/photocell kit
Self payment kit
Back lane kit
Normally open (NA) kit
BYAS kit
Reader holder column kit
Transit counter kit
Power from above kit
Voice alarm kit
Desktop remote control unit kit
Child safety sensor kit
Remote control kit
Fastening kit

Note: It is important to configure the size of the arm on the control board in order to ensure optimum operating conditions. Related instructions are available in the manual.



Warning: It is the client's responsibility to identify and evaluate the use of the product as an emergency exit in compliance with the current norms and regulations which can be applied.

importante

All horizontal conductors required for cable passage and positioned under bases of gates and of typical system components for access control must be installed at least 150 mm deep.
Any chased metal ducts must be positioned in axis with the ends of the gate.

The customer is responsible for ensuring that ECo brand products are managed and maintained in accordance with the layout structure, connections and characteristics defined during installation.

The dimensions specified on this data sheet are approximate. For correct installation, we suggest you contact our customer service at the following address: service@e-co.us



HC2 S.r.l.
via per Rogeno, 19
23845 Costa Masnaga (LC)
Tel. +39.031.879125
Fax. +39.031.8570484

www.e-co.us

info @e-co.us
sales @e-co.us
service @e-co.us